

CEMBLEND 50



bringing materials to *life*™



BLASTFURNACE CEMENT BS EN 197-4 CEM III/A 42,5L

CEMblend 50 is a factory produced Blastfurnace cement suitable for most applications.

CEMblend 50 is a Blastfurnace cement which conforms to BS EN 197-4 CEM III/A 42,5L with a minimum blastfurnace slag content of 50%. It is a quality assured cement with independent third party certification and carries CE marking.

Applications

CEMblend 50 contains a controlled blend of Portland cement and ground granulated blastfurnace slag. It is recommended as an alternative to Portland cement for most applications including civil engineering, building, ready-mixed concrete and concrete products.

Properties

The properties of CEMblend 50 concrete compared with Portland cement concrete at the same cement content are:

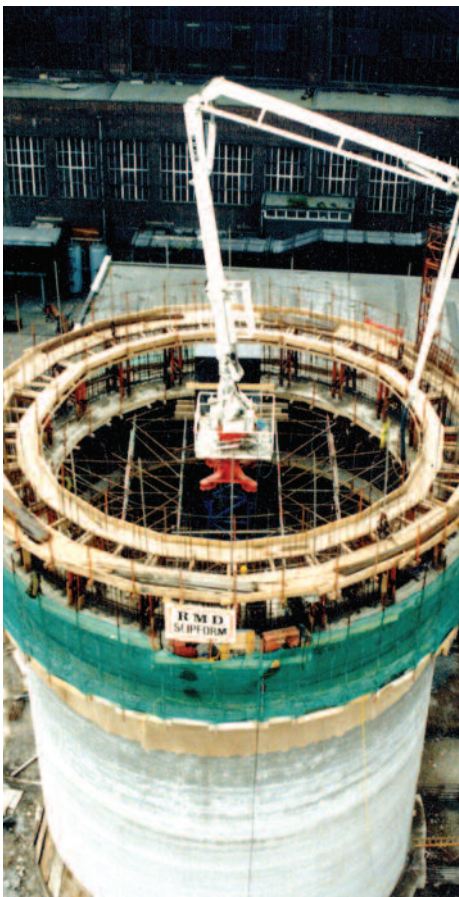
- Parity in 28 day compressive strength.
- Improved workability retention.
- Recommended for use with high reactivity aggregates.
- Extra care is required with curing concrete in order to realise the full potential strength and long-term durability of the concrete.
- Slightly lighter in colour. Freshly exposed concrete may exhibit a slight blue-green tinge, this is not uncommon and will fade and disappear with exposure to the atmosphere leaving the lighter colour associated with CEMBlend 50 concrete. The original discolouration will not recur.

Availability

CEMblend 50 is available in bulk in Ireland. Details of availability can be obtained from the contacts listed overleaf.

Conditions of Use

- Concrete, mortars and grouts containing CEMblend 50 must be specified and used correctly for best performance.
- CEMBlend 50 should not be mixed with additions or other cement types.
- The cement content must be correct and the water:cement ratio as low as possible consistent with satisfactory placing, thorough compaction and effective curing.
- The final finish quality of this material will depend upon the operative having the required skills and a familiarisation with the materials and its application methods.
- Lafarge Cement UK cannot be held responsible where workmanship has not been carried out in accordance with good practice.



- CEMblend 50 is manufactured from natural products, and slight shade variations may occur. CEMblend 50 will also have shade variations from differing manufacturing centres.

Technical Support

Further information or specification advice on CEMblend 50 and the full range of Lafarge cements can be obtained through the contacts listed overleaf.

Health and Safety

Contact between cement powder and body fluids (eg. sweat and eye fluids) may cause irritation, dermatitis or burns. Cement is classed as an irritant under the Chemicals (Hazard Information and Packaging) Regulations.

For further information, including control of soluble hexavalent chromium, refer to the appropriate Lafarge Cement Health and Safety Information Sheets.

The information in this datasheet is accurate at the time of printing, but Lafarge Cement UK reserve the right to amend details as part of their product development programme.

| Typical properties (for guidance only) | | | Further information | |
|---|--------------------------|----------|---|--|
| Surface area | (m ² /kg) | 420 | Technical helpline Tel: 0845 812 6232 info@lafargecement.co.uk Customer services Tel: 0845 812 6300 customerservice@lafargecement.co.uk | |
| Setting time – initial | (minutes) | 170 | | |
| BS EN 196-1 Mortar – compressive strength | | | | |
| 2 day | (N/mm ²) | 15 | | |
| 7 day | (N/mm ²) | 30 | | |
| 28 day | (N/mm ²) | 55 | | |
| Apparent particle density | (kg/m ³) | 3000 | | |
| Bulk density | (kg/m ³) | 1300 | | |
| Colour | L value | 67 to 71 | | |
| Sulfate | SO ₃ (%) | 2.60 | | |
| Chloride | Cl (%) | <0.04 | | |
| Declared Mean Alkali * | Eq Na ₂ O (%) | 0.40 | | |
| Proportion of ggbs | (%) | Min. 50 | | |

*Calculated from the alkali content of the CEM I component and the alkali contribution from the blastfurnace slag.

LAFARGE CEMENT IRELAND
 Gotto Wharf
 Northern Road
 Belfast Docks Industrial Estate
 Belfast BT3 9AL
 Tel. 028 90 357 120
 Fax 028 90 357 127
www.lafargecement.co.uk

