

Cemergi™

BLASTFURNACE CEMENT BS EN 197-1 CEM III/A 42,5L



bringing materials to *life*™



Cemergi is a factory produced Blastfurnace cement suitable for most applications.

Cemergi is a Blastfurnace cement which conforms to BS EN 197-1 CEM III/A 42,5L with a minimum blastfurnace slag content of 50%. It is a quality assured cement with independent third party certification and carries a CE mark.

Applications

Cemergi contains a controlled blend of Portland cement and ground granulated blastfurnace slag. It is recommended as a sustainable alternative to Portland cement for most applications including civil engineering, building, ready-mixed concrete and concrete products.

Availability

Cemergi is available in bulk from selected locations. Details of availability can be obtained from the contacts listed overleaf.

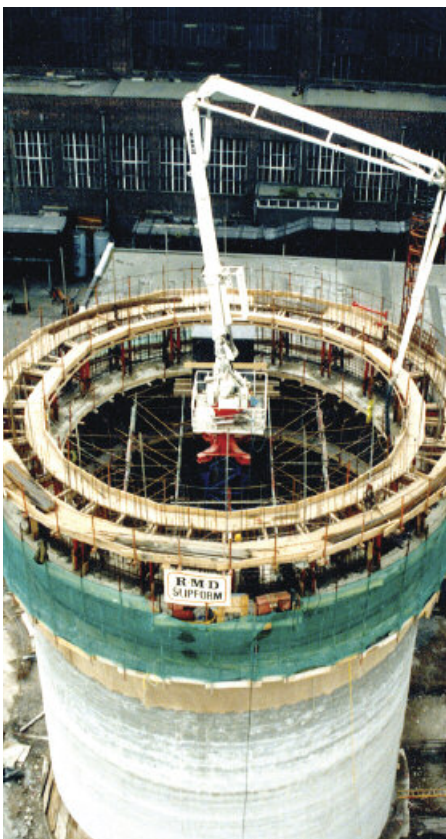
Conditions of Use

- Concrete containing Cemergi must be specified and used correctly for best performance.
- Cemergi should not be mixed with additions or other cement types.
- The cement content must be correct for the intended application (see BS 8500) and the water:cement ratio as low as possible consistent with satisfactory placing, thorough compaction and effective curing. Trial mixes are always recommended.
- The final finish quality of this material will depend upon the operative having the required skills and a familiarisation with the materials and its application methods.
- Lafarge Cement UK cannot be held responsible where workmanship has not been carried out in accordance with good practice.
- Cemergi is manufactured from natural products, and slight shade variations may occur. Cemergi will also have shade variations from differing manufacturing centres.

Properties

The properties and workability of Cemergi concrete compared with Portland cement concrete at the same cement content and workability are:

- Similar in 28 day compressive strength.
- Continued strength gain after 28 days.
- Improved workability retention.
- Reduced effective alkali content. Recommended for use with high reactivity aggregates including recycled aggregates.
- Improved sulfate resistance. Cemergi is classified by BS 8500 as CEM III/A+SR.
- Extra care is required with curing concrete in order to realise the full potential strength and long-term durability of the concrete.
- Reduced heat of hydration.
- Slightly lighter in colour. Freshly exposed concrete may exhibit a slight blue-green tinge, This is not uncommon and will fade and disappear with exposure to the atmosphere leaving the lighter colour associated with Cemergi concrete. The original discolouration will not recur.



CEMERGI BLASTFURNACE CEMENT

Technical Support

Further information and advice on this product and the full range of Lafarge Cement products can be obtained through the contacts listed below.

Health and Safety

Contact between cement powder and body fluids (eg, sweat and eye fluids) may cause irritation, dermatitis or burns. Cement is classed as an irritant under the Chemicals (Hazard Information and Packaging) Regulations.

For further information, including control of soluble hexavalent chromium, refer to the Lafarge Cement Health and Safety Information Sheet for Portland-slag products.

Typical properties (For guidance only, not to be used for specification purposes)

Surface area	(m ² /kg)	400
Setting time – initial	(minutes)	160
BS EN 196-1 Mortar compressive strength		
– 2 day	(N/mm ²)	12
– 7 day	(N/mm ²)	30
– 28 day	(N/mm ²)	52
Apparent particle density	(kg/m ³)	3000
Bulk density	(kg/m ³)	1300
Colour	L value	68 - 73
Sulfate	SO ₃ (%)	2.3
Chloride	Cl (%)	<0.04
Declared Mean Alkali*	Eq Na ₂ O (%)	0.04
Proportion of ggbs	(%)	50

* Calculated from the alkali content of the CEM I component and the alkali contribution from the blastfurnace slag.

The information in this datasheet is accurate at the time of printing, but Lafarge Cement UK reserve the right to amend details as part of their product development programme.

For further information

Technical helpline

Tel: 0845 812 6232

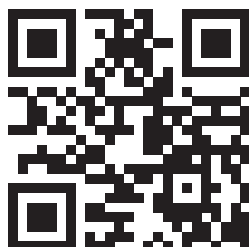
E-mail: info@uk.lafarge.com

Customer services

Tel: 0845 812 6300

E-mail:

customerservice@uk.lafarge.com



LAFARGE CEMENT UK LTD

Portland House
Bickenhill Lane
Solihull, Birmingham
B37 7BQ

Tel. 0845 812 6400

Fax 0845 812 6200

www.lafarge.co.uk

