



Finishing Solutions



bringing materials to *life*

GTEC™ – The dynamic new face of Lafarge Plasterboard

We all know that an innovative company always stays one step ahead and continuously adapts to the changing market.

Our customers have told us that our branding is unclear. In response, we are delighted to present **GTEC™** – the exciting new commercial brand from Lafarge.

GTEC™ provides a more simplified structure, making it easier for customers to source and purchase the right Lafarge products and systems.

It brings further clarity to the Lafarge offer, delivering confidence along with the Lafarge brand to everything we do, symbolising highest quality products, recognised technical expertise, sustainable initiatives such as our waste offer and excellent customer service, all backed by the peace of mind delivered by the **Lafarge GTEC System Warranty**.

From April onwards **GTEC** will be launched into the marketplace, bringing a fresh new look to our packaging, point of sale material, literature and merchandising reinforcing the quality and service you receive from Lafarge.

The launch of the **GTEC** Commercial brand will result in the renaming of our product range.

For example **Lafarge Cormet C Stud** will now be **GTEC C Stud**.

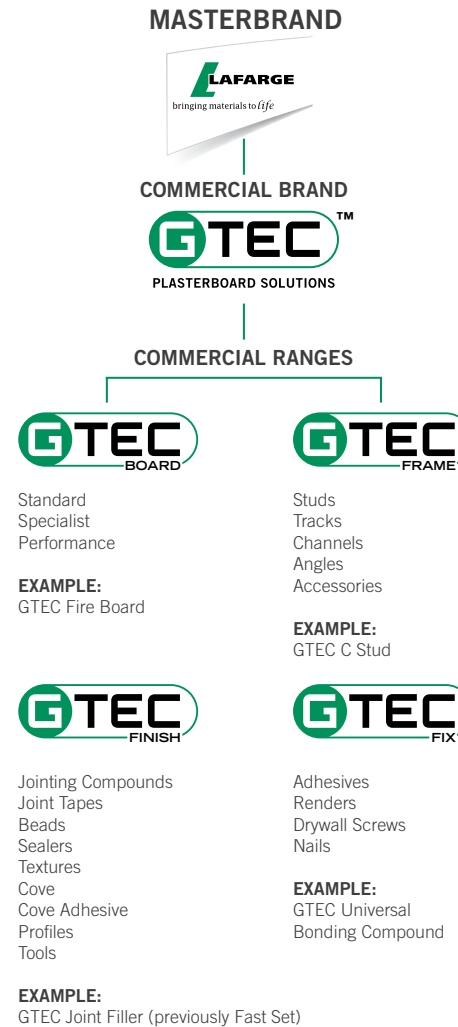
A detailed product comparison table is available from **Literatureline** on **01275 377 582**.



PLASTERBOARD SOLUTIONS

Contents

| | |
|------------------------------------|----|
| Taping & Jointing | 2 |
| Jointing Compounds | 3 |
| The Lafarge GTEC Deco system | 6 |
| GTEC Joint Tapes & Flex Tapes | 8 |
| GTEC Beads & Sealers | 10 |
| GTEC Cove & Cove Adhesives | 12 |
| GTEC Profiles | 14 |
| Premier International Taping Tools | 17 |



Taping & Jointing Applications

Tapered Joints



The Finishing Solutions brochure is a comprehensive guide to the **Lafarge GTEC Finish** product range. It provides information for selecting the right finishing product for the job, application instructions to creative solutions such as **GTEC Cove** and **GTEC Profiles**.

External Angles



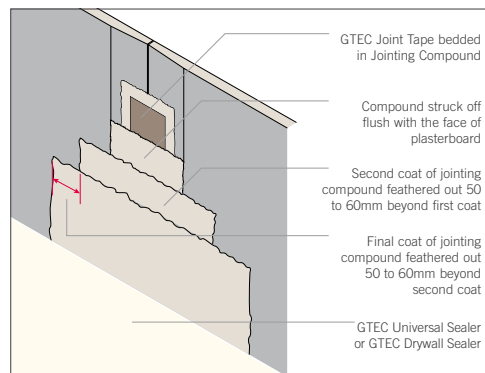
The **Lafarge GTEC Taping & Jointing system** is used to create continuous seamless joints when drylining walls and ceilings. Covering three and two step application methods, Lafarge has the right finishing product for any drylining system.

Internal Angles



Taping and jointing does not involve as much labour or drying out time as a traditional plaster skim. All our jointing compounds finish white, are exceptionally smooth and easy to sand for a very fine finish.

Tapered Edge Board Jointing



Jointing Compounds

There are three different types of Jointing Compounds:

GTEC Setting Compounds

Traditional compounds used for filling and bedding joints for a 3 coat application. Not suitable as a finishing coat.

GTEC Setting / Air-drying Compounds

A combined air-drying and setting compound used as an all in one jointing compound for a 2 coat application.

GTEC Air-drying Compounds

Air-drying compounds used for bedding joints and as a finishing coat for either a 3 or 2 coat application.

Lafarge offer both powder and ready mixed products which can also be used for machine application.

Air-drying compounds are not suitable for bedding external corners: always use a setting compound.

Jointing Compounds Product Selector

| | | Product Type | Bedding Tape | Filling Coat | Finishing Coat |
|---------------|------------------------|------------------------|--------------|--------------|----------------|
| Classic Range | GTEC Joint Filler | Setting | ✓ | ✓ | ✗ |
| | GTEC Joint Cement | Air Drying | ✓* | ✓ | ✓ |
| | GTEC Smartmix | Air Drying | ✓* | ✓ | ✓ |
| Xtra Range | GTEC Allset Xtra | Setting/ Air Drying | ✓ | Not Required | ✓ |
| | GTEC Joint Cement Xtra | Air Drying | ✓* | Not Required | ✓ |
| | GTEC Smartmix Xtra | Air Drying | ✓* | Not Required | ✓ |
| Deco Range | GTEC Deco Joint Cement | Air Drying | ✓* | Not Required | ✓ |
| | GTEC Deco Machine | Air Drying | ✓* | ✓ | ✓ |
| | GTEC Deco Filler | Setting | ✓ | ✓ | ✗ |

*Whilst air drying compounds are suitable for filling joints, it is necessary to leave adequate drying time between each coat.

GTEC Setting Compound



GTEC Joint Filler

Gypsum based joint compound with 90 minute setting time for **bedding tapes** by hand application. Also used for bedding external corner protection.

(Previously known as Fast Set)

Coverage Guide:

12.5kg bag
25m² Bedding & Filling Only
37m² Bedding Coat Only

Shelf Life:

4 months

GTEC Air-drying Compounds



GTEC Joint Cement

Air-drying joint cement for bedding tapes and finishing joints by hand or machine.

(Previously known as New Pure Velvet)

Coverage Guide:

25kg bag
55m² Full Taping Operation
165m² Finishing Coat Only

Shelf Life:

6 months



GTEC Joint Cement Xtra

Light-weight, air-drying joint cement offering **superior coverage** and **easy sanding**. Can be used for bedding tapes and finishing joints in a 2-stage application. Also suitable for machine application.

(Previously known as Rapid Sand)

Coverage Guide:

22.5kg bag
64m² Full Taping Operation
174m² Finishing Coat Only

Shelf Life:

6 months

GTEC Air-drying Compounds Ready-mixed



GTEC Smartmix

Ready-mixed, mid-weight joint compound offering better coverage and workability than standard ready-mixed compounds. Can be used for bedding and finishing by hand or machine.

(Previously known as Fineform)

Coverage Guide:

20kg bucket
45m² Full Taping Operation
120m² Finishing Coat Only

Shelf Life:

6 months



GTEC Smartmix Xtra

Ready-mixed, light-weight compound offering **superior coverage** and **easy sanding**. Can be used for bedding tapes and finishing joints in a 2-stage application. Ideal for machine application.

(Previously known as Readymix Lite)

Coverage Guide:

20kg bucket
50m² Full Taping Operation
135m² Finishing Coat Only

Shelf Life:

6 months

GTEC Setting / Air-drying Combined



GTEC Allset Xtra

Combined setting and air-drying compound, allows a **single compound** to be used for bedding all tapes and finishing. Can be used in a 2-stage application.

(Previously known as Easy Finish)

Coverage Guide:

10kg bag
25m² Full Taping Operation
47m² Bedding Coat Only

Shelf Life:

4 months

The Lafarge GTEC Deco System



The **GTEC Deco System** is unique to Lafarge. It is a high quality lining system which combines a pre-sealed, white faced performance plasterboard. The distinctive range of **GTEC Deco Joint Compounds**. The **Lafarge GTEC Deco System** eliminates the need for separate sealing of the plasterboard prior to decoration.

The GTEC Deco Boards include:

GTEC Megadeco which provides superior acoustic, fire and impact performance.

GTEC Hydrodeco which provides superior moisture resistance for areas such as bathrooms and kitchens.

For more information on the **GTEC Deco** products please contact the **Technical Enquiryline** on **01275 377 789**



Where to use

Anywhere that uses standard, fire resistant, sound resistant, moisture resistant or impact resistant board.

Benefits

- Eliminates the need for sealer
- Ready for direct decoration
- Saves labour
- Saves time

GTEC Deco Setting Compound



GTEC Deco Filler

GTEC Deco Filler is a gypsum based compound designed for bedding and filling joints by hand when using the **Lafarge GTEC Deco System**.

Coverage Guide:
12.5kg Bag
25m² Bedding & Filling Only

Shelf Life:
4 months

GTEC Air-drying Compounds Ready-mixed



GTEC Deco Joint Cement

GTEC Deco Joint Cement is a light-weight, ready-mixed compound which must be used for the final coat of the jointing process and can be used for bedding and filling when using the **Lafarge GTEC Deco System**.

Coverage Guide:
20 kg Bucket
50m² Full Taping
135m² Finishing Coat Only

Shelf Life:
6 months



GTEC Deco Machine

GTEC Deco Machine is a light-weight, ready-mixed compound formulated for use with Premier International Taping Tools. As with **GTEC Deco Joint Cement**, **GTEC Deco Machine** must be used for the final coat of the jointing process when using the **Lafarge GTEC Deco System**.

Coverage Guide:
20 kg Bucket
50m² Full Taping
135m² Finishing Coat Only

Shelf Life:
6 months

GTEC Joint Tapes & Flex Tapes



The protection and treatment of joints, corners and edges are very important when drylining. It is paramount that the right product is used for the right purpose.

Lafarge offer a number of jointing tapes for either hand or machine application to ensure the perfect finish.

The Lafarge range of **GTEC Tapes** offer the dryliner the right tape for any job.



GTEC Joint Tape

White perforated, cross fibre paper tape. Suitable for hand or mechanical application with **Lafarge GTEC Jointing Compounds**. Provides superior level of joint reinforcement.

Uses:

- Flat joints (on walls or ceilings)
- Internal corners
- Roll length 150m



GTEC Patching Tape

Glass fibre, self adhesive tape. For patching plasterboard.

Uses:

- Patching plasterboard
- Not recommended for jointing where background is liable to structural movement
- Extra care is required when product is applied to internal corners
- Provides lower resistance to cracking than **GTEC Joint Tape**
- Roll length 90m



GTEC Flex Tape

Cross fibre paper tape reinforced with heat bonded, zinc coated steel strips for the protection of external corner angles. Bed into position using **GTEC Setting Compounds**. No waste - cut to the required length using Tin Snips.

Uses:

- Hand applied
- Protection of external angles (including splayed angles and curves)
- Roll length 33m - in an easy to dispense box

GTEC Beads & Sealers



Sealing of plasterboards not only improves the surface coverage of paint, it equalises the suction across the board and joint and allows wallpaper to be stripped in the future.

This step is often forgotten when drylining, resulting in costly re-work.

Before decorating plasterboard which has been drylined, it is important to seal the boards.



GTEC Corner 90° External

Paper tape beads reinforced with galvanised metal, provides clean, crisp angles, wax coated to reduce paper burr.

Uses:

- Hand applied
- Protection of 90° external angles
- 2.4m and 3.0m lengths
- Cut to required length using Tin Snips



GTEC Duo & Edging Beads

Galvanised steel beads for drywall corner and edge reinforcement.

Uses:

- Hand applied
- Duo bead provides reinforcement for external corners
- Edging bead provides a finish to plasterboard edges
- **GTEC Duo Beads** available in 2.4m and 3.0m lengths
- **GTEC Edging Bead** available in 3.0m lengths
- Cut to required length using Tin Snips



GTEC Universal Sealer

For use on plasterboard prior to paint and wallpaper application. Improved whiteness and covering power. Equalises the suction of the entire surface across board and joint. Enables the stripping of wallpaper. Prevents plasterboard from staining. Does not provide a vapour check.

Coverage Guide:

10ltr Bucket
100m² One Coat, 70m² Two Coats

Shelf Life: 12 months

Drying Time: 1-2 hours



GTEC Drywall Sealer

Ivory, pre-decoration coat for plasterboard. Equalises the suction of the entire surface across board and joint. Enables the stripping of wallpaper. Can also provide a vapour check (15MNs/g), if two coats are applied to the plasterboard. Does not include a stain inhibitor.

Coverage Guide:

10ltr Bucket
100m² One Coat, 70m² Two Coats

Shelf Life: 12 months

Drying Time: 1-2 hours

GTEC Cove & Cove Adhesives



GTEC Cove is a simple and cost-effective way of adding attractive and distinctive features to wall and ceiling junctions.

GTEC Cove is made from plaster encased in a strong paper liner. The square back profile and pure gypsum core provide high strength and rigidity giving easy fixing and good workability.

Cove 120

NOW LIGHTER!

Cove 120 is now even lighter, so installation is easier than ever!



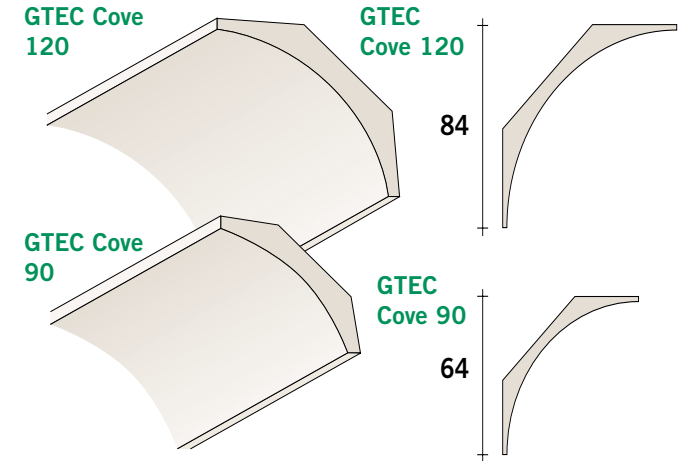
GTEC Cove comes in two sizes

| Girth mm | Length mm | Weight kg/m |
|----------|------------------|------------------|
| 90 | 3000 | 1.15 |
| 120 | 3000, 3600, 4200 | 0.67, 0.79, 0.91 |

Creative Solutions

Used on its own, or in combination with plasterboard strips, **GTEC Cove** can complement many different room styles.

To reproduce the appearance of traditional plaster cornices at a small fraction of the cost, plasterboard strips can be positioned between the coving and wall and/or ceiling.



GTEC Cove Adhesives

GTEC Cove must be fixed with **GTEC Cove Adhesive**. It has exceptional smoothness for ease of application and dries white for ease of decoration. **GTEC Cove Adhesive** is also ideal for filling and patching **GTEC Cove**.

Available in 12.5kg and 5kg bags.



GTEC Profiles

GTEC Shadowline Reveal



Lafarge offers a range of Softform and Shadowline pre-primed aluminium decorative profiles allowing the creation of subtle shapes and shadows to intrigue the eye from tight radius bends, bullnose corners to uplighters and subtle reveals.

GTEC Shadowline profiles provide many opportunities for the introduction of relief and articulation to wall and ceiling surfaces: expressed joints, reveals, accented junctions, recessed panelling and stepped cornices, architraves and mouldings.

GTEC Softform profiles provide smooth curves at intersecting planes, corners, doors surrounds, partition junctions and bullnose ends. They are a stylish solution to corner protection in high traffic areas.

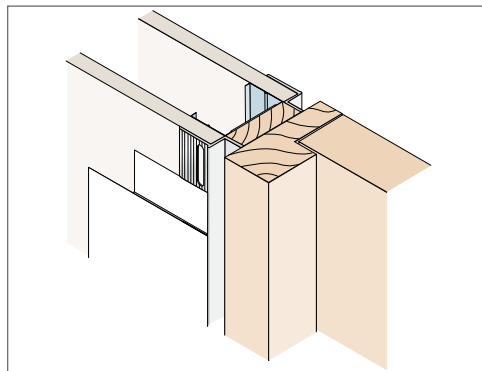
GTEC Shadowline Uplighter



GTEC Softform Bullnose



GTEC Shadowline Reveal



GTEC Shadowline Components



GTEC Shadowline Uplighter

Crisp stepped extrusion to incorporate linear lighting.



GTEC Uplighter Support Bracket

Provides a mounting for linear lighting.



GTEC Shadowline Reveal

Provides a means of relieving runs of drywall with recessed accent lines.



GTEC Shadowline Corner Step

Allows complex corner details to be incorporated into the wall angles, ceilings, soffits and columns.



GTEC Shadowline Skirting

The Shadowline Skirting provides a recessed finish to the wall at floor level. The bottom edge of the skirting is thinner to allow scribing to an irregular floor surface.



GTEC Shadowline Trim Reveal

Enables neat architrave details to be created around door frames, skirtings and at partition junctions.



GTEC Shadowline Z Step

Allows the drywall linings to be easily raised or recessed.



GTEC Shadowline Edge Trim

Sharp 90° aluminium extrusion installed against cut edges of plasterboard.



GTEC Shadowline Flex Trim

Allows raised or recessed panels or opening in walls to be constructed with curved edges.

GTEC Softform Components



GTEC Softform Uplighter

Curved casing to incorporate linear lighting.



GTEC Uplighter

Provides a mounting for linear lighting.



GTEC Softform Bullnose

Creates a smooth round finish to a partition end and projecting bulkhead.



GTEC Softform Outside Corner

Allows partitions and wall linings to be constructed with 90° corners. No additional impact protection is required.



GTEC Softform Inside Corner

Allows partitions and wall linings to be constructed with 90° corners. No additional impact protection is required.

Premier Taping Tools



Premier Taping Tools offers tool design expertise and are the first choice for drywall tools.

Careful precision engineering makes **Premier Taping Tools** tough, reliable and built to last, making the job easier and more profitable for you.

If you require any further information please contact our orderline on:
0800 373 636



Taping Tools

Lafarge also offer a range of Taping Tools which includes:

- GTEC Jointing sponge
- GTEC Internal corner tool
- GTEC Pole sander
- GTEC Hand sander
- GTEC Hammer head taping knife
- GTEC Long handled broad knife
- GTEC Sanding paper



The Backing of a World Leader

Lafarge is the world's largest producer of construction materials, including gypsum products, aggregates and cement. The preservation of natural resources and respect for the needs of people and the environment are fundamental to the organisation's business approach and philosophy.

GB Orderline

For placing orders, delivery enquiries and local stockists etc.

Tel: 0800 373636
Fax: 01275 377700
Email: orderline@lafarge-gypsum.lafarge.com

Ireland Orderline

For placing orders, delivery enquiries and local stockists etc.

Tel: +353 (0)1 6203114
Fax: +353 (0)1 6203117
Email: irelandorders@lafarge.com

Literatureline

For next day delivery of Lafarge literature.

Tel: 01275 377582
Fax: 01275 377402
Email: literatureline@lafarge-gypsum.lafarge.com

The Technical Training Centre

For all drywall training needs from basic introduction to advanced skills and development.

Tel: 01275 377581
Fax: 01275 377402
Email: training@lafarge-gypsum.lafarge.com

Technical Enquiryline

Technical advisory service.

Tel: 01275 377789
Fax: 01275 377456
Email: enquiryline@lafarge-gypsum.lafarge.com

Wasteline

Gypsum waste management enquiries.

Tel: 01275 377579
Fax: 01275 377402
Email: wasteline@lafarge-gypsum.lafarge.com



Certificate No. FM 13594



Certificate No. EMS 75024

Plasterboard, jointing and associated products made in the United Kingdom by Lafarge Plasterboard are manufactured in accordance with management systems certified to BS EN ISO 9001: 2000 (quality) and BS EN ISO 14001: 2004 (environment)



LAFARGE PLASTERBOARD LTD
Marsh Lane, Easton-in-Gordano
Bristol BS20 0NF
Tel: 01275 377773
Fax: 01275 377737
www.lafargeplasterboard.co.uk

LAFARGE PLASTERBOARD (IRELAND) LTD
Unit 38, Fonthill Industrial Park,
Clondalkin, Dublin 22
Tel: +353 (0) 1626 1603
Fax: +353 (0) 1626 1679
www.lafargeplasterboard.co.uk



The information given in this publication is correct to the best of the publisher's knowledge at the time of print, but users must satisfy themselves as to the suitability of any particular product or detail for a specific application.