



Fixing Solutions



GTEC™ – The dynamic new face of Lafarge Plasterboard

We all know that an innovative company always stays one step ahead and continuously adapts to the changing market.

Our customers have told us that our branding is unclear. In response, we are delighted to present **GTEC™** – the exciting new commercial brand from Lafarge.

GTEC™ provides a more simplified structure, making it easier for customers to source and purchase the right Lafarge products and systems.

It brings further clarity to the Lafarge offer, delivering confidence along with the Lafarge brand to everything we do, symbolising highest quality products, recognised technical expertise, sustainable initiatives such as our waste offer and excellent customer service, all backed by the peace of mind delivered by the **Lafarge GTEC System Warranty**.

From April onwards **GTEC** will be launched into the marketplace, bringing a fresh new look to our packaging, point of sale material, literature and merchandising reinforcing the quality and service you receive from Lafarge.

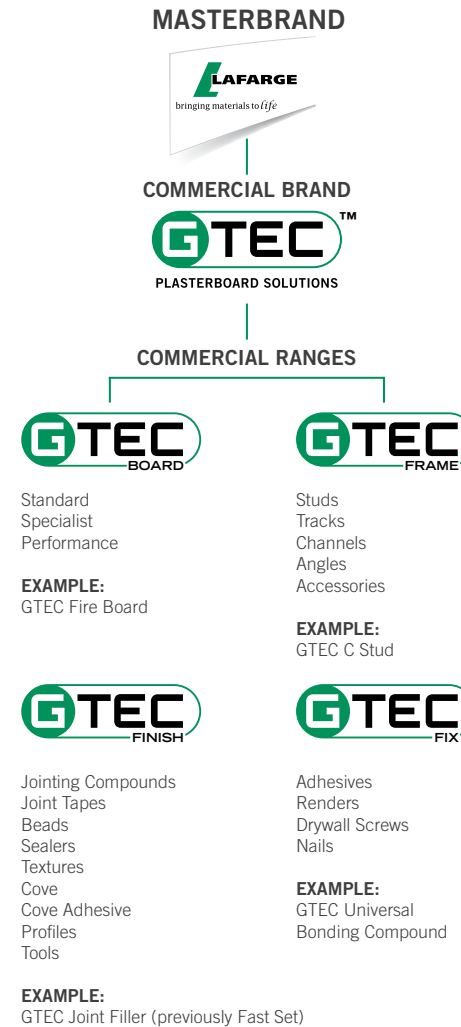
The launch of the **GTEC** Commercial brand will result in the renaming of our product range.

For example **Lafarge Cormet C Stud** will now be **GTEC C Stud**.

A detailed product comparison table is available from **Literatureline** on **01275 377 582**.



PLASTERBOARD SOLUTIONS



Contents

GTEC Drywall Screws	2
The Range of GTEC Drywall Screws	3
Tips on Installation	9
GTEC Adhesives & Renderers	10
GTEC Warranty	13

GTEC Drywall Screws



GTEC Drywall Screws from Lafarge are purpose-designed to allow efficient fixing of plasterboard to metal and timber studs. The extensive **GTEC Drywall Screw** range allows exactly the right screw to be selected for each application. That means easier and faster installation and reduced waste.

GTEC Drywall Screws manufactured by Grabber, are uncompromisingly designed to meet the needs of drywall installation, so they hit the mark every time. Precision heads, threads and points mean fast, accurate fixing.



Industry beating quality brings peace of mind and our special colour coded packaging helps ensure the right screw for the task is always to hand.

As part of the complete **Lafarge GTEC Drywall systems**, there's simply no reason to chose anything else.

Features & Benefits

- Exclusive Scavenger Head™ eliminates paper burrs
- Screw heads don't shear off
- Extra high grade steel for extra holding power
- Sharper threads for optimum drivability
- Designed to exceed worldwide building standards

The Range of GTEC Drywall Screws



GTEC Self Tapping Screws

For attaching plasterboard to light gauge metal wall and ceiling systems.

- GTEC Drywall Self Tapping
- GTEC Megadeco Self Tapping
- GTEC Collated Self Tapping

Available in sizes 25mm to 86mm



GTEC High Thread Screws

For attaching plasterboard to timber framework.

- GTEC High Thread
- GTEC Collated High Thread

Available in sizes 32mm to 96mm



GTEC Self Drilling Screws

For attaching plasterboard to heavy gauge metal and wall ceiling systems.

- GTEC Self Drilling
- GTEC Pan Head Self Drilling
- GTEC Wafer Head Self Drilling

Available in sizes 25mm to 67mm



GTEC Specialist Self Tapping Screws

- GTEC Acoustic Floor Screws
- GTEC Trim Head Self Tapping
- GTEC Pan Head Self Tapping
- GTEC Wafer Head Self Tapping

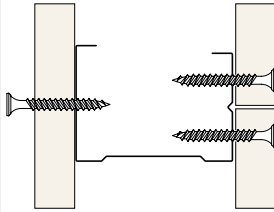
GTEC Self Tapping



For attaching plasterboard to light gauge metal and ceiling systems.

Length mm	Gauge	Box Quantity	Boxes Per Carton	Lafarge Code
25*	6	1000	12	25DST1000
32*	6	1000	6	32DST1000
38*	6	1000	6	38DST1000
41	6	1000	6	41DST1000
44	6	1000	6	44DST1000
51	7	500	6	51DST500
57	7	500	6	57DST500
63	8	500	6	63DST500
76	8	250	12	76DST250
86	10	200	6	86DST200

*also available as a full pallet

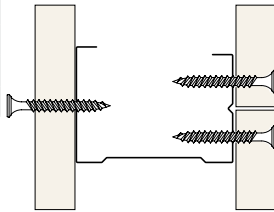


GTEC Collated Self Tapping



Strips of 50 collated drywall screws for use with auto-feed drywall tools.

Length mm	Gauge	Box Quantity	Boxes Per Carton	Lafarge Code
25	6	1000	10	25CDST1000
35	6	1000	10	35CDST1000
38	6	1000	10	38CDST1000
44	6	1000	10	44CDST1000

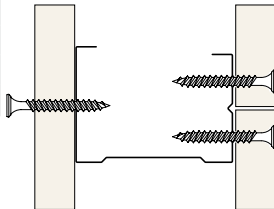


GTEC Megadeco Self Tapping



A zinc coated drywall screw specifically designed for fixing GTEC Megadeco to light gauge metal and ceiling GTEC Systems.

Length mm	Gauge	Box Quantity	Boxes Per Carton	Lafarge Code
25	7	1000	12	25MST1000
32	7	1000	6	32MST1000
38	7	1000	6	38MST1000
44	7	1000	6	44MST1000

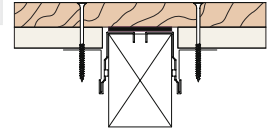


GTEC Acoustic Floor Self Tapping



For use with the Lafarge GTEC Acoustic Floor System.

Length mm	Gauge	Box Quantity	Boxes Per Carton	Lafarge Code
63	7	500	6	63AFST500

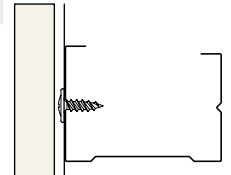


GTEC Wafer Head Self Tapping



For connecting light gauge metal components beneath plasterboard.

Length mm	Gauge	Box Quantity	Boxes Per Carton	Lafarge Code
14	8	500	12	14WHST500

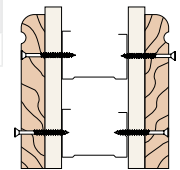


GTEC Trim Head Self Tapping



For attaching wood trims to metal with self embedded screws.

Length mm	Gauge	Box Quantity	Boxes Per Carton	Lafarge Code
41	7	500	12	41THST500
57	7	500	6	57THST500

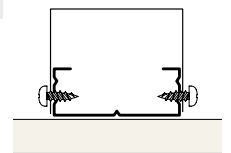


GTEC Pan Head Self Tapping



For connecting light gauge metal components.

Length mm	Gauge	Box Quantity	Boxes Per Carton	Lafarge Code
11	7	500	12	11PHST500

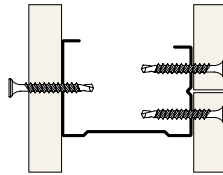


GTEC Self Drilling



For attaching plasterboard to heavy gauge metal wall and ceiling systems.

Length mm	Gauge	Box Quantity	Boxes Per Carton	Lafarge Code
25	6	1000	12	25DSD1000
32	6	1000	6	32DSD1000
38	6	1000	6	38DSD1000
44	6	1000	6	44DSD1000
67	8	500	6	67DSD500

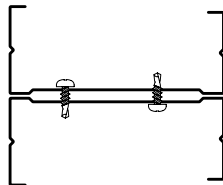


GTEC Pan Head Self Drilling



For connecting heavy gauge components.

Length mm	Gauge	Box Quantity	Boxes Per Carton	Lafarge Code
11	6	500	12	11PHSD500

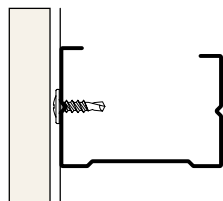


GTEC Wafer Head Self Drilling



Low profile head for connecting heavy gauge metal components beneath plasterboard.

Length mm	Gauge	Box Quantity	Boxes Per Carton	Lafarge Code
14	8	500	12	14WHSD500

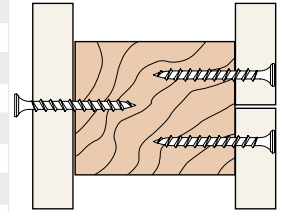


GTEC High Thread



For attaching plasterboard to timber framework.

Length mm	Gauge	Box Quantity	Boxes Per Carton	Lafarge Code
32	6	1000	6	32DHT1000
38	6	1000	6	38DHT1000
41	6	1000	6	41DHT1000
51	7	500	6	51DHT500
63	8	500	6	63DHT500
76	8	250	12	76DHT250
86	10	200	6	86DHT200
96	10	200	6	96DHT200

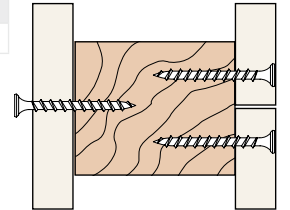


GTEC Collated High Thread



Strips of 50 collated drywall screws for use with auto-feed drywall tools.

Length mm	Gauge	Box Quantity	Boxes Per Carton	Lafarge Code
38	6	1000	10	38CDHT1000
51	7	800	10	51CDHT800



GTEC Drywall Nails



Zinc electroplated ring shanked nail with thin wide heads and long sharp diamond points for fixing plasterboards to timber framing.

Length mm	Pack Size kg	Box Quantity	Lafarge Code
30	20	13200	NAIL30ZINC
40	20	11400	NAIL40ZINC

GTEC Nailable Plugs



For the mechanical fixing of GTEC Thermal Boards.

Length mm	Box Quantity	Lafarge Code
60	100	NP60
80	100	NP80
100	100	NP100
120	50	NP120

Tips on Installation

GTEC Drywall Screws have a unique bugle head design for fixing plasterboard which eliminates paper burrs and provides a flush finish. Extra sharp points and high-grip threads result in fast penetration through the plasterboard and stud. The screws are phosphate coated and lightly oiled for protection against corrosion.

GTEC High Thread Screws are used for attaching plasterboard to timber framework.

GTEC Self Tapping Screws are for attaching plasterboard to light gauge metal up to 0.7mm thick.

GTEC Self Drilling Screws are for heavy gauge metal from 0.7mm to approximately 2.0mm thick.

Installation

Drive Screws:

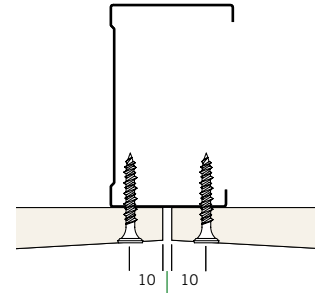
- at least 10mm in from paperboard edges of plasterboard
- at least 13mm in from cut edges of plasterboard
- at least 6mm in from edges of timber framing
- at least 3mm in from edges of metal framing

Screws Spacing:

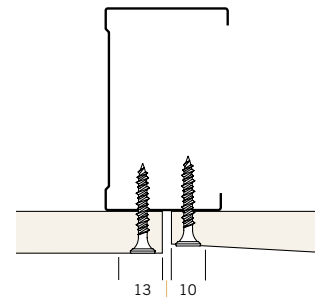
- Partitions, maximum 300mm
- Ceilings, maximum 230mm in the field of the plasterboard
- 150mm at cut edges and perimeter
- Linings, maximum 300mm

Drive screws squarely through board and into framing until screw head is just recessed. Spot screw heads with jointing compound to provide a flush surface.

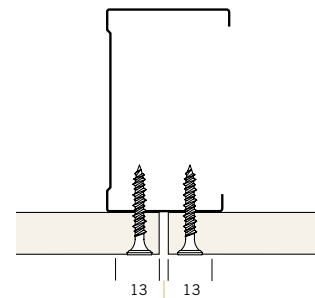
GTEC Pan Head screws and **GTEC Wafer Head** screws are used primarily for fixing metal studs and other metal framing components together: Self-tapping for light gauge metal and self-drilling for heavy gauge metal.



Fix positions at bound edges of boards



Fix positions at bound edge/cut edge joint



Fix positions at cut edges of boards

Adhesives & Renders



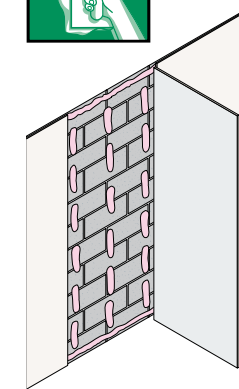
Lafarge has developed a range of adhesives and renders to ensure the right fixing for the right job. Products range from bonding compounds for fixing plasterboards and thermal boards to masonry backgrounds, to adhesives for light domestic use, such as bonding plasterboard to tiles for areas such as kitchens and bathrooms.

Lafarge now offers **GTEC Ecoat**, an acoustic render, specifically designed to seal porous holes in blockwork walls prior to drylining.



GTEC Universal Bonding Compound

Gypsum based compound for direct bonding plasterboard and thermal boards to walls or bonding **GTEC Metal Furring** to walls.



Coverage Guide:
25kg bag
4m² External walls
8m² Internal Walls

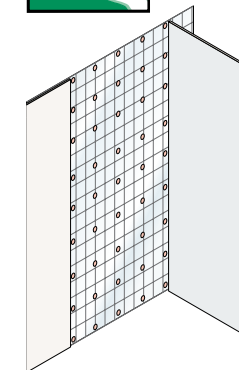
Shelf Life:
5 months

Lafarge Code:
BOND25



GTEC Wall Lining Adhesive

A thin bedding adhesive for fixing plasterboards to sound backgrounds such as ceramic tiles, metal, and timber.



Coverage Guide:
5ltr bucket
50m²

Shelf Life:
12 months

Lafarge Code:
RDA5



GTEC Ecoat

GTEC Ecoat is designed to meet Part E requirements for party walls in the UK. The product seals porous holes in blockwork walls to improve the acoustic performance prior to drylining. Robust Detail status, for more information please contact our Technical Enquiryline on 01275 377789.

Coverage Guide:

25kg bag
5m²

Shelf Life:

6 months

Lafarge Code:

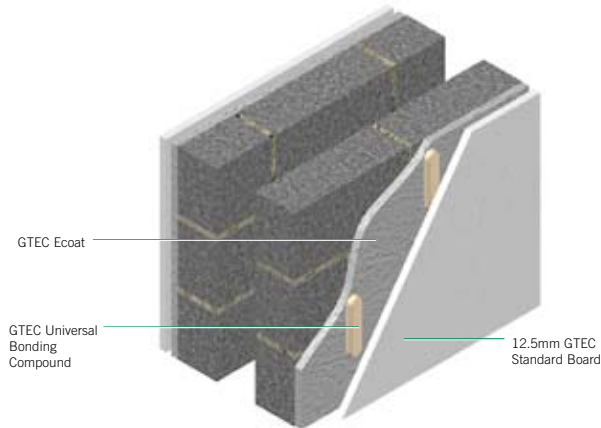
ECOAT

Features & Benefits

The new GTEC Ecoat product is gypsum based and is a superior product to sand and cement.

Benefits

- 5m² coverage per 25kg bag (offers twice the coverage of traditional sand and cement options)
- Easy to handle bagged product
- Superior workability.



System solutions... for life



PLASTERBOARD SOLUTIONS

Our Promise: We provide quality, support and expertise across all our GTEC product ranges and promise that our Lafarge GTEC Plasterboard Solutions will perform to the agreed lifetime and performance requirements.

Our Availability: We have a national network of merchants and distributors.

Our Expertise: We provide technical support at all levels as well as on and off-site training, tailored to meet your needs.

Our Commitment to the Environment: We are dedicated to the preservation of natural resources and the environment.



Always insist on genuine Lafarge products for your total peace of mind.

The Backing of a World Leader

Lafarge is the world's largest producer of construction materials, including gypsum products, aggregates and cement. The preservation of natural resources and respect for the needs of people and the environment are fundamental to the organisation's business approach and philosophy.

GB Orderline

For placing orders, delivery enquiries and local stockists etc.

Tel: 0800 373636
Fax: 01275 377700
Email: orderline@lafarge-gypsum.lafarge.com

Ireland Orderline

For placing orders, delivery enquiries and local stockists etc.

Tel: +353 (0)1 6203114
Fax: +353 (0)1 6203117
Email: irelandorders@lafarge.com

Literatureline

For next day delivery of Lafarge literature.

Tel: 01275 377582
Fax: 01275 377402
Email: literatureline@lafarge-gypsum.lafarge.com

The Technical Training Centre

For all drywall training needs from basic introduction to advanced skills and development.

Tel: 01275 377581
Fax: 01275 377402
Email: training@lafarge-gypsum.lafarge.com

Technical Enquiryline

Technical advisory service.

Tel: 01275 377789
Fax: 01275 377456
Email: enquiryline@lafarge-gypsum.lafarge.com

Wasteline

Gypsum waste management enquiries.

Tel: 01275 377579
Fax: 01275 377402
Email: wasteline@lafarge-gypsum.lafarge.com



Certificate No. FM 13594



Certificate No. EMS 75024

Plasterboard, jointing and associated products made in the United Kingdom by Lafarge Plasterboard are manufactured in accordance with management systems certified to BS EN ISO 9001: 2000 (quality) and BS EN ISO 14001: 2004 (environment)



LAFARGE PLASTERBOARD LTD
Marsh Lane, Easton-in-Gordano
Bristol BS20 0NF
Tel: 01275 377773
Fax: 01275 377737
www.lafargeplasterboard.co.uk

LAFARGE PLASTERBOARD (IRELAND) LTD
Unit 38, Fonthill Industrial Park,
Clondalkin, Dublin 22
Tel: +353 (0) 1626 1603
Fax: +353 (0) 1626 1679
www.lafargeplasterboard.co.uk



The information given in this publication is correct to the best of the publisher's knowledge at the time of print, but users must satisfy themselves as to the suitability of any particular product or detail for a specific application.