

# Lafarge Asphalt & Contracting



bringing materials to *life*™

## WHAT WE ARE ABOUT

Asphalt is a mix of aggregates and bitumen – a sticky, black hydrocarbon extracted from natural deposits or crude oil processing – which is used for road surfacing, airfield runways, car parks, driveways and sporting venues.

## WHAT WE DO

Asphalt & Contracting manufacture and supply of a range of asphalt products and also provide asphalt contracting services for some of the UKs largest highways schemes.

## WHERE WE ARE

**England:** West Yorkshire, Greater Manchester, Derbyshire, Staffordshire, Cambridgeshire, Norfolk, Suffolk, Bedfordshire, Hertfordshire, Essex.

**Wales:** Caerphilly.

## KEY FACTS

**Number of sites:** 19 fixed sites, 10 to 15 mobile sites.

**Number of employees:** 225 directly plus sub-contractors.

**MD:** Shaun Davidson.

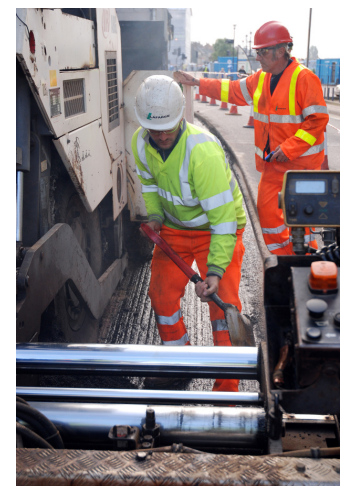
## MAJOR PROJECTS

- Gatwick and Stansted runways.
- Road surface for M25 and M1 widening.
- A46 road surface & A421.
- Norfolk & Hertfordshire County Council's highways maintenance.

**CONTACT US** Lafarge Aggregates & Concrete UK, Granite House, Watermead Business Park, Syston, Leicestershire, LE7 1WA.  
**Tel: 0844 561 0037** [www.lafarge.co.uk](http://www.lafarge.co.uk)

Follow us on Facebook – [www.facebook.com/LafargeUK](http://www.facebook.com/LafargeUK)

For Press Enquiries please contact Karen Almond: 0116 264 8255 / 07972 533724





#### DID YOU KNOW?

- The Babylonians were the first to build roads with asphalt in 625BC.
- You can find natural deposits of asphalt in lakes, including Pitch Lake at La Brea in southwest Trinidad, Bermudez Lake in Venezuela and the Dead Sea.
- In the ancient Middle East natural asphalt deposits were used for mortar, ship caulking and waterproofing and in ancient Egypt asphalt was used to embalm mummies.
- In the Far East natural asphalt was boiled and the resulting substance was used to coat scabbards and other items which needed waterproofing, and particularly in Japan household deities were also cast in this material.
- Written records of asphalt use only seem apparent in France from the 1620s. In Europe in the 1800's interest soared and Asphalt was used for roads, flat roofs and cistern linings both in France and England, where in 1837 Richard Claridge patented the use of Seyssel asphalt – obtained from the Pymont Seysell mine in France.
- Asphalt was used for roads at Whitehall, Brighton, Herne Bay, Canterbury, Kensington and The Strand.
- Now around 25 per cent of total world asphalt production takes place in Europe.
- Asphalt is 100 per cent recyclable and in the US it is the most widely recycled material by both gross tonnage and percentage with around 80 per cent of asphalt removed being reused.
- Around 95 per cent of all roads in the UK are asphalt.